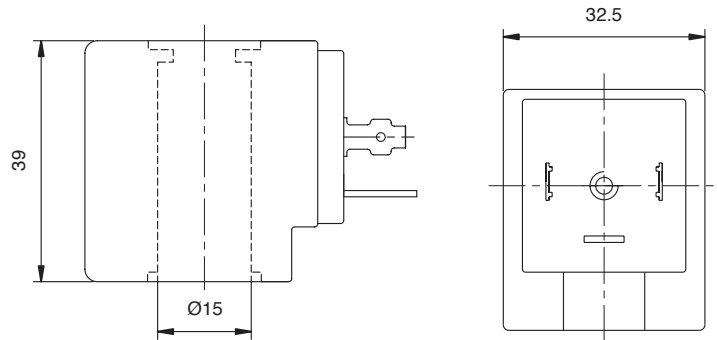
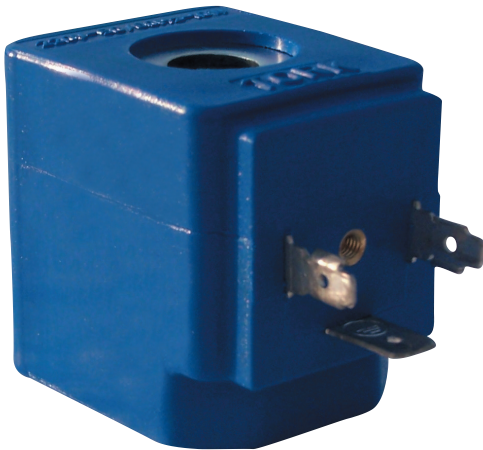


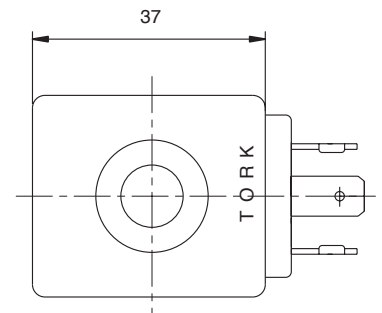
T-SB10
11
12
13
14
15**COILS**

Bobinler

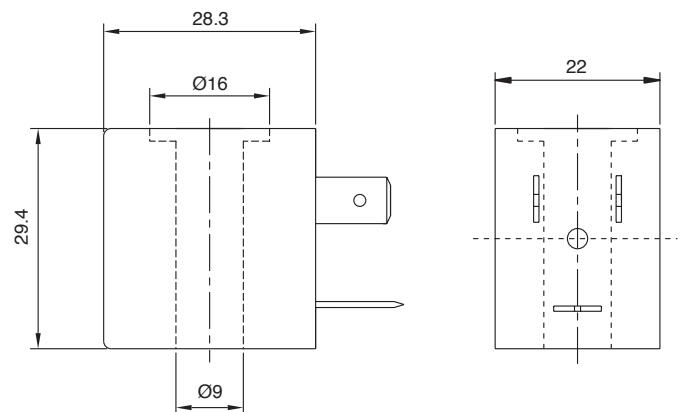
TORK[®]SB 10
SERIES

Valve Type / Order no	Valve Type / Order no	Coil Voltage
T-SB (12VA)	T-SB (17VA)	Volt
T-SB 10	T-SB 10.1	220 V AC
T-SB 11	T-SB 11.1	110 V AC
T-SB 12	T-SB 12.1	24 V AC
T-SB 13	T-SB 13.1	12 V AC
T-SB 14	T-SB 14.1	24 V DC
T-SB 15	T-SB 15.1	12 V DC

Copper Class : H class with
30% fiberglass
Connector : DIN 43 650 A
PG 9 or PG 11
Power : 12 VA-17 VA
Frequency : 50/60 Hz
Protection : P 65 with
connector
DIN 40050

**T-SB**20
21
22
23
24
25**COILS**

Bobinler

TORK[®]SB 20
SERIES

Valve Type / Order no	Coil Voltage
T-SB (6VA)	Volt
T-SB 20	220 V AC
T-SB 21	110 V AC
T-SB 22	24 V AC
T-SB 23	12 V AC
T-SB 24	24 V DC
T-SB 25	12 V DC

Copper Class : H class with
30% fiberglass
Connector : DIN 43 650 B PG 9
Power : 5 W-2 W
Frequency : 50/60 Hz
Protection : IP 65 with connector
DIN 40050

