

Nitrogen Dioxide Transmitter E2618-NO2



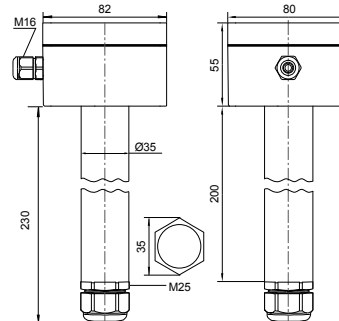
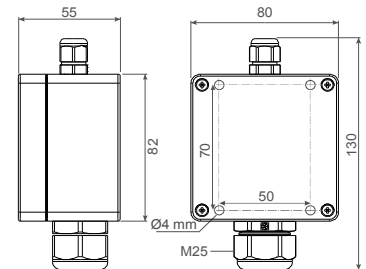
Features

- Accurate and stable measurement
- Wall mount or duct-mount robust enclosure
- Remote probe option
- Two analog outputs settable to 4-20 mA or 0-10 V
- RS485 Modbus RTU digital interface
- LCD indicator option

Specifications

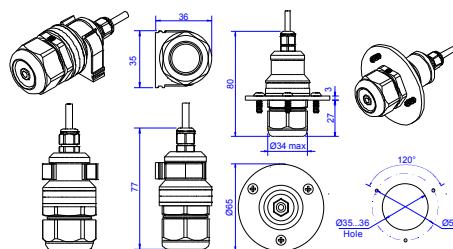
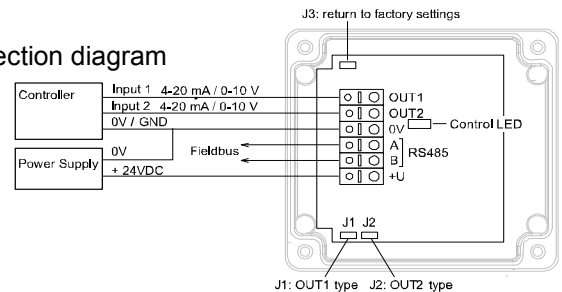
Calibration	Nitrogen Dioxide NO ₂	
Sensor type	Electrochemical	
Sampling method	Diffusion	
Typical detection range	0...20 ppm	0...200 ppm
Maximum overload	100 ppm	1000 ppm
Resolution / digital unit	0.1 ppm	1 ppm
Response time T90	< 60 s	< 40 s
	-30...50 °C	-20...50 °C
Operating conditions	15...90 %RH; atmospheric pressure ±10% non ATEXrated areas, non-aggressive atmosphere NOTE The sensor may exhibit considerable sensitivity to Cl ₂ (as well as H ₂ S, SO ₂ , O ₃ for 0...200 ppm range)	
Maintenance interval	6 months	
Sensor lifetime	> 2 years	
Self-diagnostics	Full functionality check at start-up	
Warm-up time	≤ 1 min	
Power supply	11...30 VDC / 24 VAC	
Power consumption	< 2 VA	
Digital interface	RS485, Modbus RTU protocol	
Analog outputs	2 × 4-20 mA / 0-10 V, user settable	
Enclosure	Grey ABS plastic, protection class IP65	
Dimensions	H82 × W80 × D55 mm	
Remote sensor probe	Protection IP65, shielded cable default cable length 3.0 m	
Operating environment	Industrial indoor and outdoor areas without aggressive gases or volatile silicon containing materials	
LCD indicator option		
Operating temperature	0...+50 °C	
Display dimensions	72 × 36 mm	
Number of digits	3.5 7-segment	
Character height	14 mm	
Other features	Backlight	

Wall-mount version



Duct-mount version

Connection diagram



Remote probe